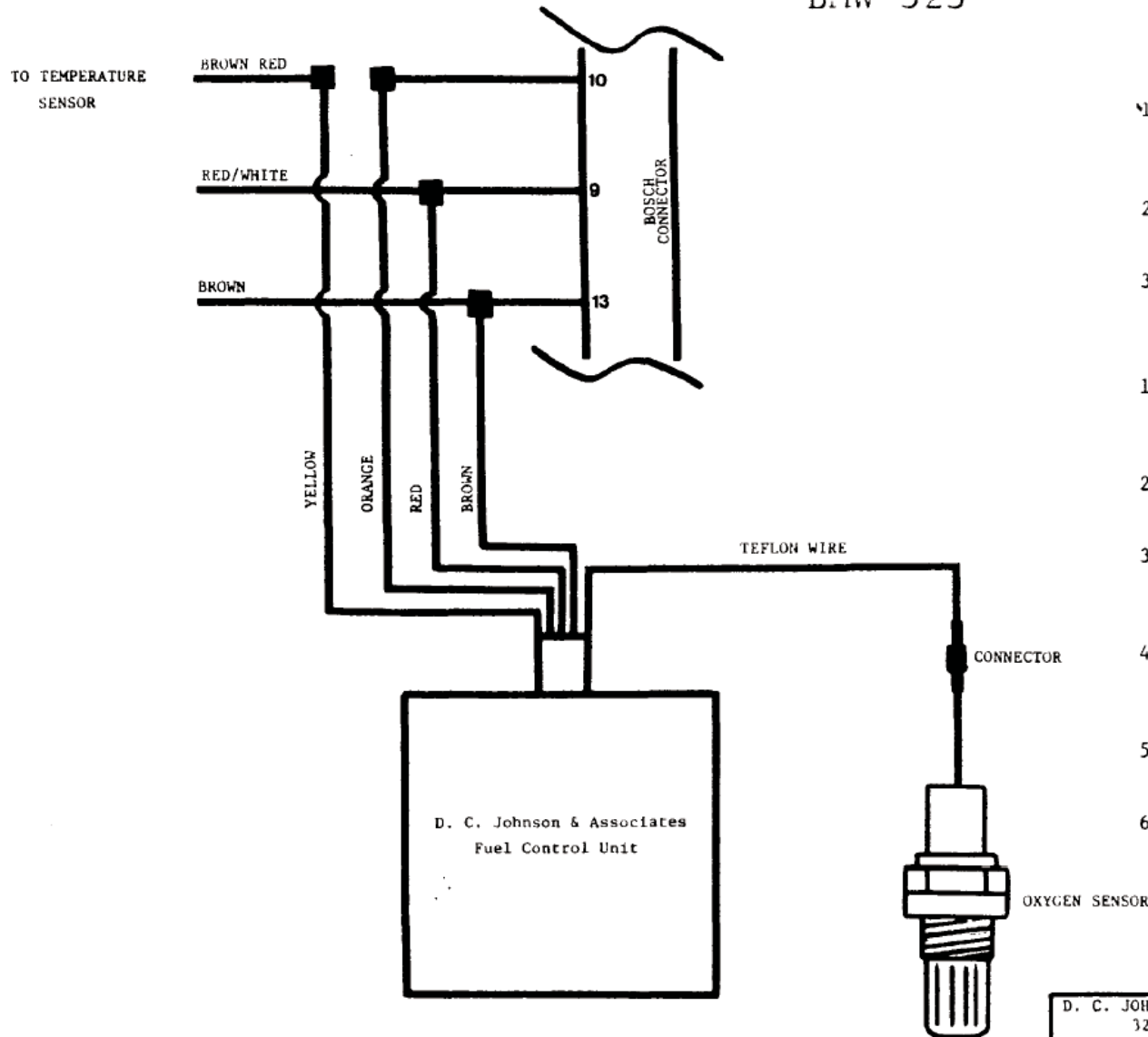


# BMW 323



## SET-UP: EXTREMELY IMPORTANT

- 1) Tune car to perfect running order before beginning conversion. This is also necessary for new cars.
- 2) Read all instructions before proceeding with installation.
- 3) Adjust airflow meter for 0.5% CO

## INSTALLATION

- 1) Cut Brown/Red wire from Pine #10 of Bosch connector and connect it to Yellow wire from the Johnson Fuel Control Unit (JFCU).
- 2) Connect the Orange JFCU wire to Pin #10 of the Bosch connector.
- 3) Splice the Brown JFCU wire to the Brown wire connected to Pin #13 of the Bosch connector.
- 4) Splice the Red JFCU wire to the Red/White wire connected to Pin #9 of the Bosch connector.
- 5) Connect the teflon JFCU wire to the oxygen sensor.
- 6) Use a continuity tester to verify all connections.

© Copyright 1984

D. C. JOHNSON & ASSOC. 323 FUEL CONTROL UNIT				SIZE NA	FSCM NO.	DWG. NO. 2008005	REV. B
DRAWN AK		ISSUED		SCALE NA		SHEET 1 of 1	